

# FB14 Portable Tube Luminometer

The FB14 represents a unique portable high performance luminometer.

## Concept

The FB14 is a very small, portable single tube luminometer that combines excellent performance with ease of use and versatility. Its built-in software is ideal for field measurements. When used in the lab, a powerful PC software can be added for numerous data analysis functions.

## Detection System

The sample compartment is situated inside a sliding door, which initiates the measurement sequence upon closing. The proximity of the sample to the light detector and the use of a light reflector surrounding the major part of the vial produce optimal photon collection. The resulting efficiency, combined with the high-speed photon counter, provide a measurement performance which is unique in its class.

## User Interface Options

The FB14 can be run from its embedded software, but can also be interfaced with a powerful PC-software package:

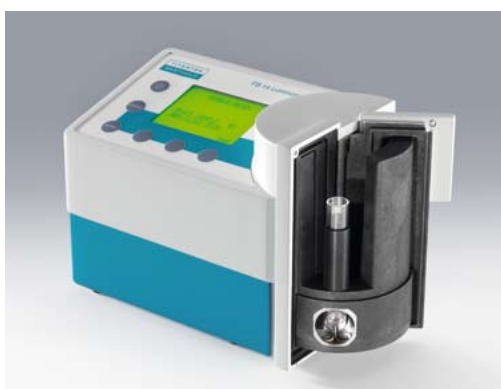
The Single Tube Luminometer PC Software is designed for stationary use in the laboratory. In addition to the Quick Measurement function, it offers five additional protocol types: Single Assay, Dual Assay, Single Kinetics, Multiple Kinetics and Cut-off Assay. The operator can define new protocols of all five types. Highly flexible graphical presentation of kinetic data is supported.



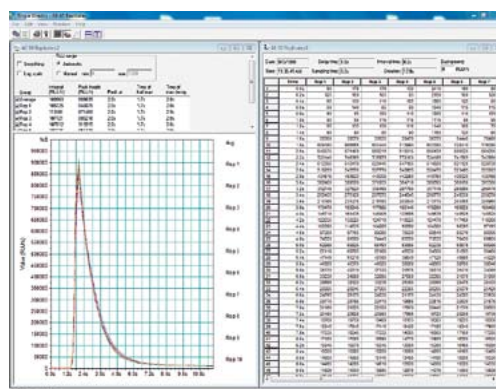
*The FB14 can be used for any luminescent glow-type application performed in single tube format, for example:*

- Water Testing
- ATP Assays
- Immunoassays
- DNA/RNA Probe Assays
- Toxicity Assays
- Biothreat Assays

# FB14 Portable Tube Luminometer



Highest sensitivity through efficient light collection.



Single Tube Luminometer Software: Example Kinetic Evaluation

## Luminometer

<b>Sample Format</b>	Tubes up to 12 mm in diameter, length 75 mm
<b>Detector</b>	State-of-the-art photon counter with a spectral range of 300–600 nm
<b>Measurement Chamber</b>	Swinging drawer with high efficiency reflector
<b>Sensitivity</b>	50 attomoles ATP
<b>Dynamic Range</b>	5.5 decades
<b>Operating Software (Microprocessor Controlled)</b>	Operation via three soft keys: sets delay and measurement time in 0.1s increments. Measurement modes: SINGLE READ and DUAL ASSAY
<b>Interface</b>	USB interface for PC connection
<b>Power Requirements</b>	Rechargeable NiMH batteries; Power supply 100–240 V AC, 7.5 V/min. 1.33 A DC
<b>Dimensions</b>	H: 14 cm, W: 17 cm, D: 11 cm
<b>Weight</b>	1.35 kg (approximately 3 lbs)
<b>Environment</b>	Storage 0–40°C up to 80% humidity (@30°C), non condensing Operation 10–35°C up to 70% humidity

## PC Software

<b>Single Tube Luminometer Software</b>	Protocol Manager with Quick Measurement, Single and Dual Assay, Single and Multiple Kinetics and Cut-off Assay
<b>Required Hardware</b>	Microsoft Windows® compatible PC, USB port
<b>Operating System</b>	Windows® XP, Vista, Window® 7
<b>Additional Software</b>	Microsoft Excel™ 2000 or higher (optional)

## Accessories

<b>Luminescence TestTube</b>	LED based, provides constant light output
------------------------------	---