

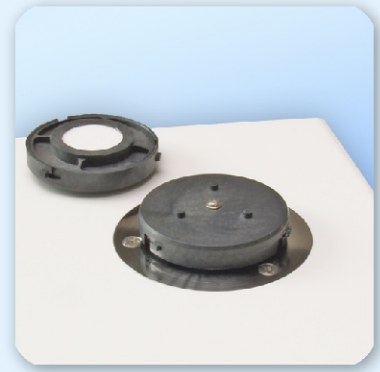
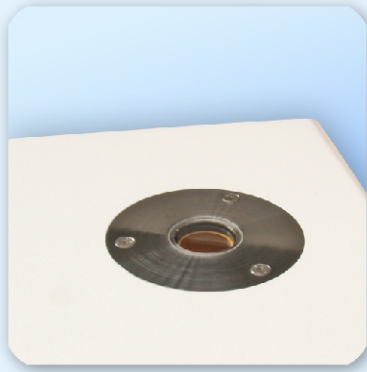
SpectraAlyzer premium TW

The SpectraAlyzer premium TW (**T**op **W**indow) is the ideal solution for bulky samples like cotton or wool balls, yarn coils, meat and other "bigger" samples that do not fit into the drawer of a standard SpectraAlyzer. Based on the same reliable optical NIR technology developed for the SpectraAlyzer basic and premium instruments, the Top Window version is more flexible in accepting different samples, but is still compatible with the commonly used closed cups. The optical sample interface is located on top of the instrument making the sample presentation an easy task - allowing even the presentation of unpacked material e.g. cheese or meat that can be placed directly on top of the optical window.

- NIR Sample/Reference technology like SpectraAlyzer premium for high sensitive and long term stable measurements
- simple sample presentation for meat, cheese, pasteous products and yarn coils
- robust and hygenic stainless steel framing window disk
- compact design optimised for benchtop lab or at-line application
- user interface with Central Operation Button for straightforward instrument operation
- many start-up calibrations available

SpectraAlyzer





Scope of supply:

- SpectraAnalyzer premium TW
- Stainless steel Closed Cup adapter
- Mains supply cable
- Handbook

Technical Data

for powders, solids and pasteous products

19 NIR filters SpectraAnalyzer® premium compatible

spectral Range: 1445 - 2348 nm

Sample/Reference measurement for each filter

high Signal to Noise > 10000:1

LCD display 240 x 128 pixels

Central Operation Button "COB"

100 Products database SpectraAnalyzer® premium

Auto-diagnostics

Printer (optional)

Standard Calibrations (optional)

Power requirements min. 90 V AC (50-60 Hz) max. 260 V AC (50-60 Hz)

Operating temperature 5 - 40 °C non-condensing

Height: 370 mm, Width: 400 mm, Depth: 350 mm, Weight: 18 kg

Order No.:

SpectraAnalyzer premium TW

10004

www.spectraalyzer.com