

# BIOBASE

## Automatic Biochemistry Analyzer



# BIOBASE

Jinan Biobase Biotech Co.,Ltd  
Biobase Meihua Trading Co., Ltd

Add: No.51 South Gongye Road ,Jinan City ,China

Tel: +86-531-81219801/03 Fax:+86-531-81219804

E-mail: [export@biobase.cn](mailto:export@biobase.cn)

Web:[www.biobase.cc](http://www.biobase.cc) [www.meihuatrade.com](http://www.meihuatrade.com)

Jinan Biobase Biotech Co.,Ltd  
Biobase Meihua Trading Co. , Ltd

## INTRODUCTION

BIOBASE is professional manufacturer of laboratory and medical products since 1999.

Our main products are:

Medical products:

Automated biochemistry analyzer, IVD Reagents, Automated ELISA processor, Microplate reader & Washer, Hematology analyzer, Electrolyte analyzer, Urine analyzer, Water purifier, etc.

Lab products:

Biological safety cabinet (Class I, II, III), Fume hood, Laminar flow cabinet, PCR cabinet,

Incubator, Refrigerator & Freezer, Water bath, Drying oven, HEPA air purifier, etc.

We have more than 800 employees, 20000 square meters production base. The wide experience on the research and manufacturing Lab and Medical products has managed BIOBASE to be able to offer a large and competitive range of products with the highest quality.

## CERTIFICATION



## BIOBASE-EMERALD Auto Biochemistry Analyzer



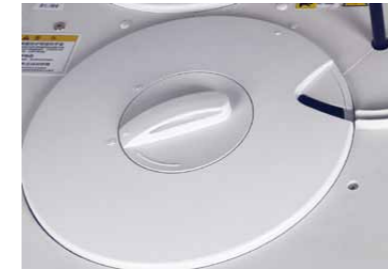
### Features:

1. Fully automated, Discrete, Random access, STAT priority, real-time dual wavelength.
2. Total open setting of items, supported different reagents from different countries.
3. Reversed optics and imported photo sensor make sure the precision of detection results.
4. Microsring injector imported from Germany assures the veracity of a trace of samples, sample step by 0.1 UL, reagent step by 0.5 UL
5. 24 hour non-stop working, convenient emergency function with inserting emergency at random.
6. Implementing analysis of ultra-trace reaction solution to 100 UL, and saving more reagents.
7. Discrete cuvette, preventing from cross-infection, and be washed and reused, making sure accurate result and save cost.
8. Perfect self-detection function makes sure the analyzer in order and accurate result.
9. Software is easy to learn and use. And test report can be printed.
10. Perfect function of quality control management is convenient for users to manage the clinical test result.
11. Detecting in the whole reaction process with reaction curve, convenient for users to monitor thoroughly and scientifically analyze the detection data.
12. Supporting software can implement the function of detecting surplus reagent through liquid level induction of reagent probe.



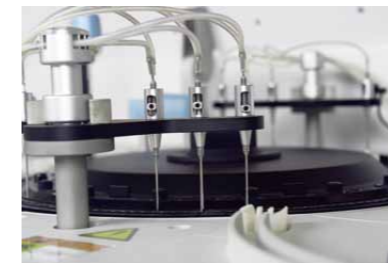
### Sample Tray

180 sample positions, dual-tray design, including 60 samples for calibration/quality dribbling refrigerated. All kinds of samples mixed put, can place original blood collection tube, micro tube, plastic tube, etc.



### Reagent Tray

200 reagent positions, dual-tray design, continuous 2~8 °C cooling within 24 hours. Washing solution can be installed in any position, including needle, stir bar washing solution and water bath disinfectant.



### Automatic Washing system

Washing and drying cuvettes automatically, high tech washing station to guarantee accurate results and ensure valid diagnostic.



### Reaction Tray

160 positions with permanent hard glass cuvettes (optical path length 5mm), and can be easily replaced with handle. Water bath ensure roviding the whole reating system heat and temperature control at 37 celsius degrees.



### Reagent/Sample Probe Mechanism

High sensitive automatic liquid level detection, along with the amount of tracking, three-dimensional anti-collision function. Three-dimensional interior and exterior probe washing technology, and High precision polishing technology for both interior and exterior of probe can reduce the cross-contamination effectively.



### Mixer

Independent stir bar, and automatic frequency conversion ensure excellent reation conditions; standardized mixing procedures; automatically washing; High precision polishing technology and nanotechnology can reduce the cross-contamination effectively

## BIOBASE Biochemistry Reagents

	Model	BIOBASE-EMERALD	
Overall Performance	Type	Discrete, Fully automatic	
	Throughput	800T/H	
	Analysis Method	End-point, Fixed-time, Rate, etc	
	Programming Items	programmable for any test items	
	Certification	CE, FDA, ISO9001, ISO14001, ISO13485	
Sample unit Sample Tubes	Sample Position	180 sample positions, dual-tray design, including 60 samples for calibration/quality dribbling refrigerated	
	Sample Tubes	Original blood collection tube, micro tube, plastic tube, etc.	
	Sample Types	Serum, plasma, urine, etc.	
	Sample Volume	2ul ~70ul (0.1ul stepping)	
	Sample Probe	Having liquid level induction function, ensuring the accuracy of adding sample	
	Probe Cleaning	Automatic washing both interior and exterior, cross contamination rate < 0.1%	
	Analysis Items	analyzing maximally 100 items at the same time	
	Reagent unit	Reagent Position	200 reagent positions, dual-tray design
Wash Solution		Washing solution can be installed in any position, including needle, stir bar washing solution and water bath disinfectant	
Reagent Volume		20-350ul, 0.5ul increment	
Temperature Control		continuous 2~8 C cooling within 24 hours	
Reagent Probe		Having liquid level induction function, ensuring the accuracy of adding reagent. Inventory checking	
Probe cleaning		Automatic washing both interior and exterior	
Reaction unit	Reaction Volume	150-550ul	Reaction Temperature 37 C
	Temperature system	Water bath, Real-time temperature display	
	Cuvettes	160 positions with permanent hard glass cuvettes (optical path length 5mm)	
	Stirrer	Independent stir bar, nanotechnology, highly polished, automatic frequency conversion	
	Cleaning	automatic water cleaning and drying system	
	System Adjustment	System can record the blank value and get more accurate result by deducting blank base value of each cuvette	
Optical System	Light Source	Halogen lamp, lamp can be auto sleep and wake up	
	Receiver	Holographic flat field concave grating diode array detection	
	Wavelength Range	16 wavelengths from 340 to 800nm	
	Linear Range	-0.3000 ~ 3.3000 Abs	
	Stray light	< 0.1% or Abs > 3.0	
Calibration and QC	Calibration Method	Linear calibration: K factor, two- and multiple linear Nonlinear Calibration: spline, polynomial, Logarithm, etc.	
	Quality Control	Auto QC, cooled QC positions	
Software	Emergency Function	Emergency sample can be placed in the sample tray at any time	
	Software	Windows XP (SP3) / Win 7	
	Online	Full bi-directional communication possible	
	Data Processing	Having reaction curve detection and data display function in the whole process	
Others	Water consumption	Deionized water, < 45 L/hour	
	Power Supply	110-240V, 50Hz, < 1.5KW	
	Dimension	1508x865.5x1204mm	
	Weight	400Kg	

107 kinds of liquid reagents:

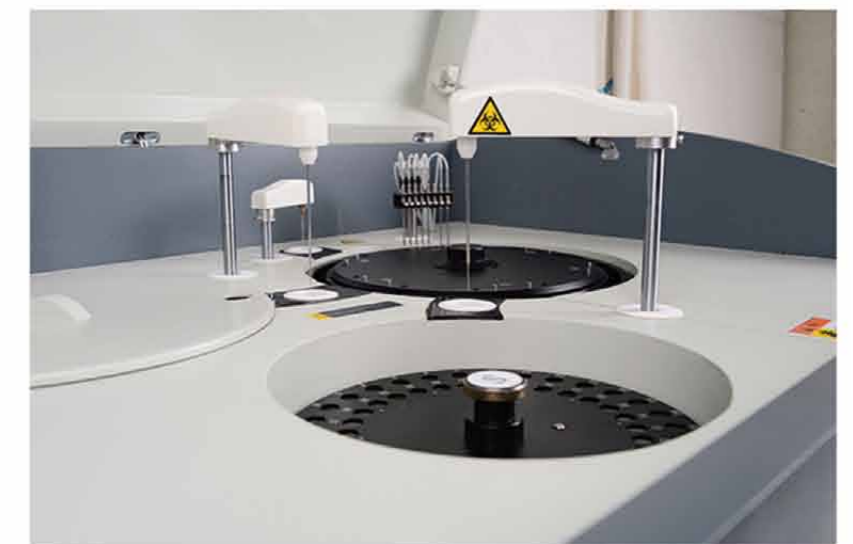
Including Blood Lipid Items, Liver Function Items, Myocardium Zymogram Items, Kidney Function Items, Glycometabolism Items, Pancreas Items, Pepsinogen Items, Blood Gas Electrolyte Items, Rheumatism Items, Hemagglutination Items and Special Protein Items.



Reagent Concentrate



Class 100 Clean Room



Used in BIOBASE or other brands Biochemistry analyzer



Biochemistry Reagent

High-Quality, Cost-Effective, Clinical Chemistry-Solutions.

1. Stable liquid
2. Reliable results
3. Test enzyme, substrate, special protein and ion
4. Having quality control and calibration to ensure accuracy
5. Applicable to various models of biochemistry analyzer
6. Suitable for Hitachi 7170/7600P, Olympus AU400/600/640/1000/2700, Beckman, Mindray instrument.
7. Customized packing acceptable